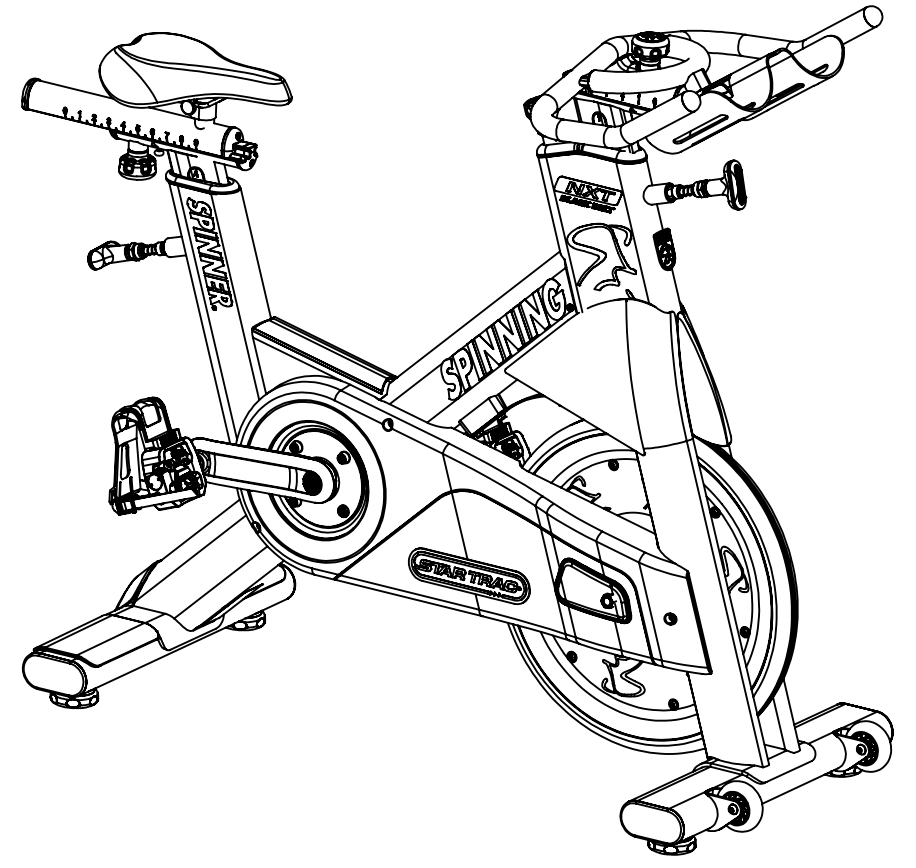
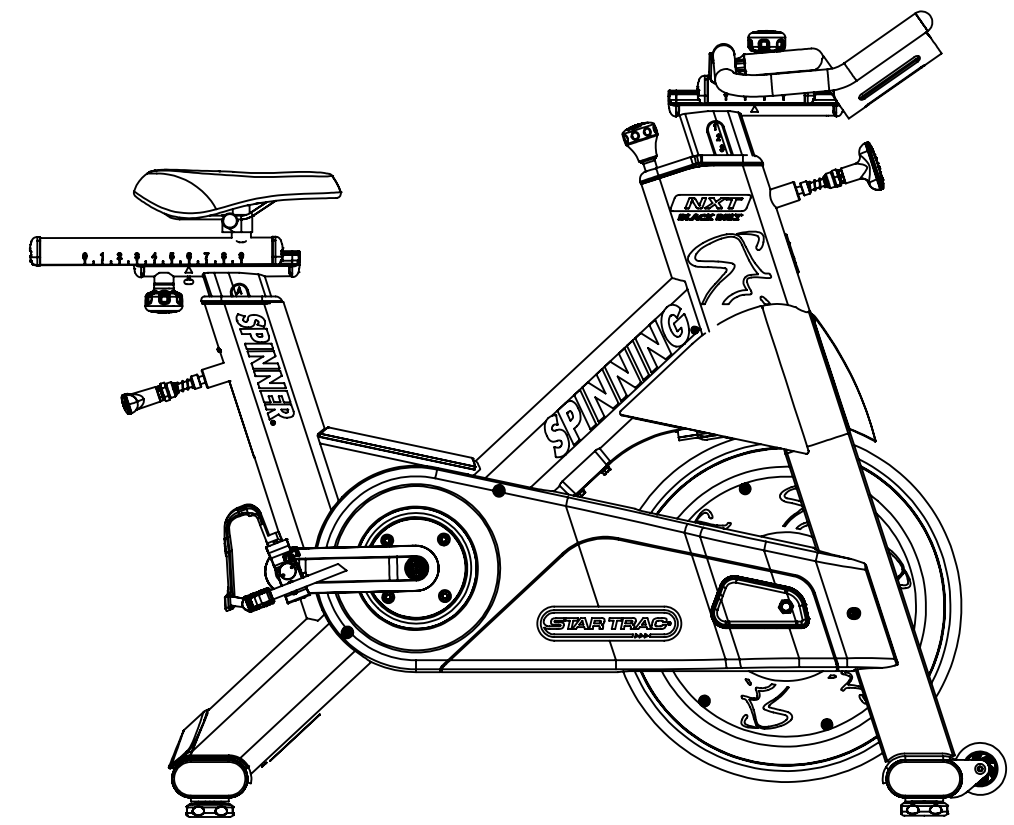
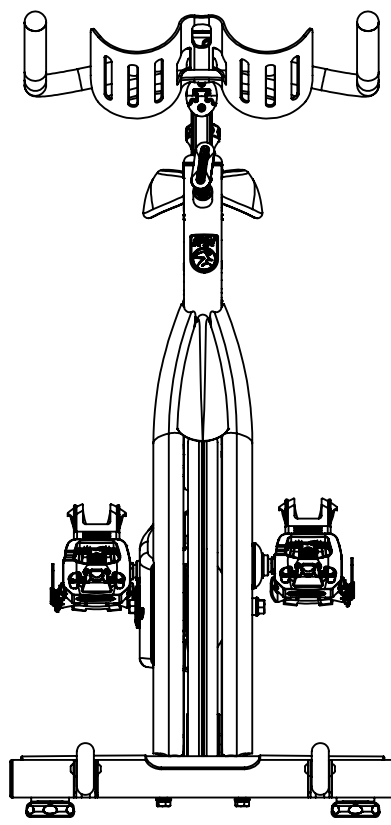
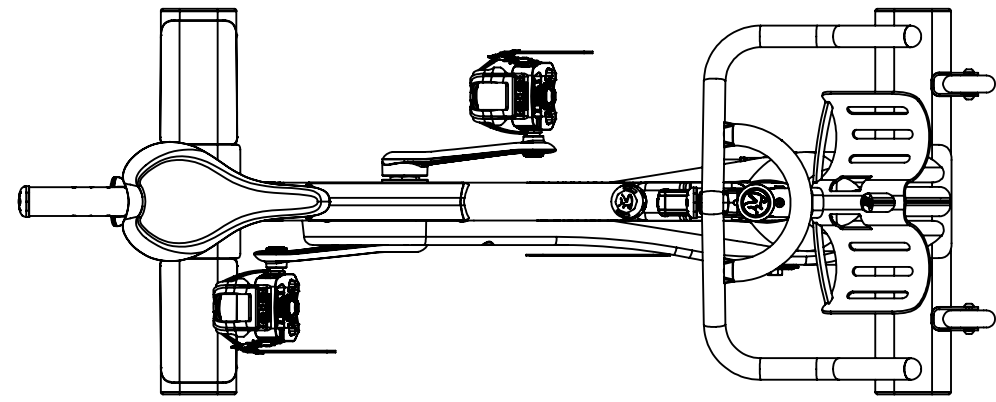


REVISION HISTORY				
REV	DATE	DESCRIPTION	ECO	BY
A	1/29/2014	PRODUCTION RELEASE	14547	OT



**DOCUMENT STATUS:**

NOTICE OF PROPRIETARY INFORMATION  
THIS DOCUMENT SHALL NOT BE REPRODUCED NOR SHALL THE INFORMATION CONTAINED HEREIN BE USED BY OR DISCLOSED TO OTHER EXCEPT AS EXPRESSLY AUTHORIZED BY CORE HEALTH & FITNESS, LLC.

CLASS OF WORK	UNLESS OTHERWISE SPECIFIED DIMS ARE IN mm. TOLERANCES FOR MEASURE OF LENGTH ARE:							ANGLES = ±2°
	0.5 to 3	>3 to 6	>6 to 30	>30 to 120	>120 to 400	>400 to 1000	>1000 to 2000	
FINE	±0.05	±0.05	±0.1	±0.15	±0.2	±0.3	±0.5	----
MEDIUM X	±0.1	±0.1	±0.2	±0.3	±0.5	±0.8	±1.2	±2
COARSE	±0.2	±0.3	±0.5	±0.8	±1.2	±2	±3	±4
VERY COARSE	----	±0.5	±1	±1.5	±2.5	±4	±6	±8

MATERIAL  
SEE BOM

FINISH  
N/A

VENDOR: N/A

P/N: N/A

THIRD ANGLE PROJECTION



	INITIAL	DATE
DRAWN	OT	1/29/2014
CHECKED		
APPROVED		

**CORE HEALTH & FITNESS, LLC**  
4400 NE 77th Ave., Suite 300  
Vancouver, WA 98662

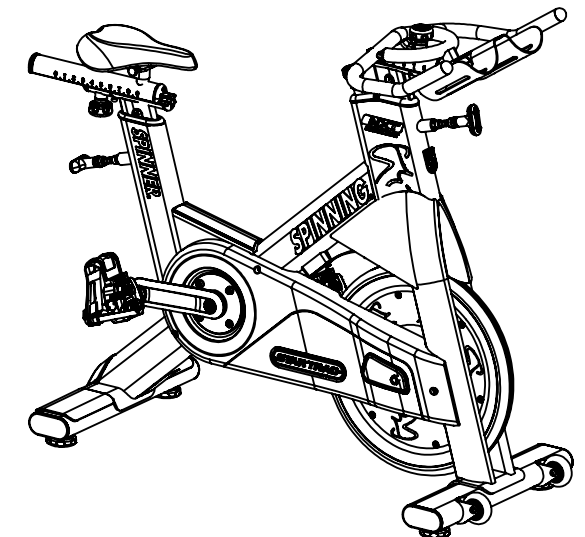
CORE PART NO: **740-8502-XX** REV: **A**

TITLE: **ASSY, SPINNER NXT BLACK BELT**

SCALE: 1:10 | SHEET 1 OF 7 | SHEET SIZE: B

ITEM NO.	PartNo	DESCRIPTION	QTY.
1	740-8545	CRANK,BELT SPINNER, DR	1
2	740-7560	CRANK ARM, LEFT	1
3	740-7555	NUT, AXLE, B/B, M24x1.5	1
4	740-8002	SPACER, BEARING, BB SPINNER	1
5	740-7553	BEARING, 6005 SERIES, 25x47x12, 2RS	2
6	740-7554	B/B AXLE	1
7	740-7916	M5 X 16MM, DOWEL PIN	2
8	740-8145	BOLT, CRANKARM, M8	4
9	740-7614	ASSY, PEDAL, R	1
10	740-7613	ASSY, PEDAL, L	1
11	740-8544	PULLEY, 6 RIB, NXT BELT	1
12	740-7825	WASHER, 8.4MM ID x 16MM OD x 1.6 THK	4
13	740-7167	WASHER, LOCK, SPLIT, M6	4
14	731-0379	SCREW, M8 X1.25, 20mm, SHC, HK	4
15	740-7656	FEET, LEVELING, SPINNER	4
16	740-8037	PAD, FEET PROTECTOR	2
17	740-7564-XX	WELDMENT, STABILIZER, REAR	1
18	740-7558	END CAP, STABILIZER	4
19	740-8532-XX	FRAME, WELDMENT, NXT BELT	1
20	740-7293	WASHER, ID 5.5MM, OD 13MM, SS	1
21	740-7183	SCREW, M5X0.8X16, BHC, HE, SS	1
22	740-7597	CAP, DOWNTUBE, RUBBER	1
23	740-7780	SCREW, M4 X 0.7, 20mm, FHM, HE, SS	1
24	740-7667	ASSY, POP PIN	2
25	740-7588	COVER, GUSSET	1
26	740-7574	SLEEVE, SLIDER, HANDLEBAR	1
27	740-7548	SLEEVE, SEAT POST	1
28	731-0585	WASHER, M4	2
29	740-7812	SCREW, M4x0.7, 16mm, PHMS, PH, SS	2
30	740-7796	SWEATGUARD, NOSE, NXT	1
31	740-8542	ASSY, TENSIONER PLATE, NXT BELT	1
32	740-8539	ASSY, ROLLER, IDLER, NXT BELT	1
33	110-3556	SCREW, M6X16, HSCS, SS	1
34	740-8541	DIE SPRING GUIDE ROD, BELT SPINNER	1
35	110-3557	M5X16, BHSC, SS	1
36	140-3558	BEARING, CLUTCH, 16mm	1
37	110-3550	SPACER, BRASS GUIDE, SPINNER BELT	1
38	050-2115	LABEL, COUNTRY OF ORIGIN	1
39	050-2125	LABEL, SERIAL NO., OEM UNIV	1
40	110-3546	NUT, HEX, M8X1	1
41	110-3548	HALFNUT, M8X1.25	2
42	110-3549	LOCKNUT, M8X1.25	2
43	110-3551	LOCKNUT, M5X0.7	1
44	110-3552	SCREW, M5X0.7X20, HCSH, SS	1
45	110-3554	SCREW, M8 - 1.25 x 25mm BHSC, SS	2
46	110-3588	SCREW, M8X1.5X60 SHCS SS	1
47	110-3592	NUT, NYLOCK, M12 X 1.5	1

ITEM NO.	PartNo	DESCRIPTION	QTY.
48	140-3248	SPACER, BRASS, IDLER GUIDE	2
49	140-3557	SPRING, 103N/mm, +/-5, 18 OD, 9 ID, 70mm LONG	1
50	718-5513	BUSHING, FLANGE, Ø6mm ID X Ø8mm X Ø19mm	1
51	730-0907	WASHER, M10, SPLIT, LOCK	4
52	730-0908	WASHER, PLAIN, M10, SS	4
53	731-0373	WASHER, PLAIN, M6	2
54	731-0379	SCREW, M8 X1.25, 20mm, SHC, HK	2
55	731-0513	STICKER, STAR TRAC, DECO. 45MMX191MM	2
56	731-0585	WASHER, M4	3
57	740-7167	WASHER, LOCK, SPLIT, M6	2
58	740-7174	NUT, M6X1, HE, SS	2
59	740-7175	SCREW, M6X1.0X25, HHM, HE, SS	2
60	740-7176	SCREW, M6X1.0X50, HHM, HE, SS	1
61	740-7303	NUT, RIVET, HEX, M5X0.8	3
62	740-7304	NUT, RIVET, M6	2
63	740-7450	WASHER, FLAT, M5, SS	3
64	740-7568	WELD, FRONT STABILIZER	1
65	740-7551	TUBING, STABILIZER	1
66	740-7672	BRACKET, FRONT WHEEL	2
67	740-7655	BOSS, THREADED, M30X3.5, STEEL	2
68	001-0688	ASSEMBLY, TRANSPORT WHEEL	2
69	740-8007	BOLT, WHEEL, NXT	2
70	740-7187	SCREW, M6X1.25X10, BHC, HE, SS	2
71	740-7587	SCREW, M10 X 1.5, 20mm, HHM, SS	4
72	740-7685	BLOCK, BRAKE MOUNT	1
73	740-7799	ASSY, BRAKE PAD	1
74	740-7812	SCREW, M4x0.7, 16mm, PHMS, PH, SS	3
75	740-7825	WASHER, 8.4MM ID x 16MM OD x 1.6 THK	6
76	740-7989	COVER, ACCESS PANEL, CHAINGUARD	1
77	740-7995	ASSY, BRAKE, ADJUSTMENT KNOB	1
78	740-7996	SCREW, M5 X 0.8, 30mm, SHCS, SS	2
79	740-7997	SCREW, M5 x 0.8, 16mm, SHCS, SS	1
80	740-7999	SCREW, M6X1.0X50, HHM, HE, SS	1
81	740-8079	BADGE, SPINMAN	1
82	740-8270	ASSY, SEAT W/ POST, NXT	1
83	740-8523	CHAINGUARD, OUTER, NXT BELT	1
84	740-8524	BELT, POLY K, 6 RIB, NXT BELT	1
85	740-8525	BAR, CROSS BRACE, NXT BELT	1
86	740-8529	CHAINGUARD, INNER, NXT BELT	1
87	740-8535	ASSY, FLYWHEEL, SPINNER BELT	1
88	740-8540	D SHAFT, CLUTCH BEARING, NXT BELT	1
89	740-8562	WASHER, BRASS, CLUTCH BEARING, NXT BELT	2
90	740-8597	ENDCAP, AXLE, SPINNER FLYWHEEL	1
91	740-8598	NXT BB SPINNING DOWNTUBE DECAL	2
92	740-8599	NXT BB SPINNER SEAT TUBE DECAL	2
93	740-8619	ASSY, H-BAR&POST, 11 ADJ, NXT	1
94	740-8628	NXT BB MAST LOGO DECAL	2
95	740-8629	SPINMAN NXT BB DR DECAL	1
96	740-8630	SPINMAN NXT BB NDR LOGO	1
97	740-8631	STAR TRAC PEDAL LOGO NXT BB	2

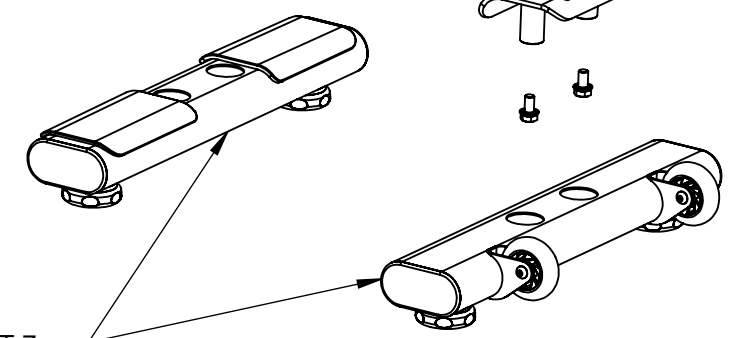
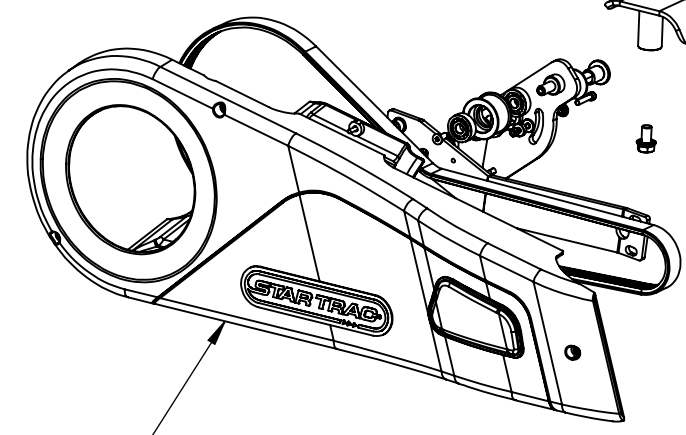
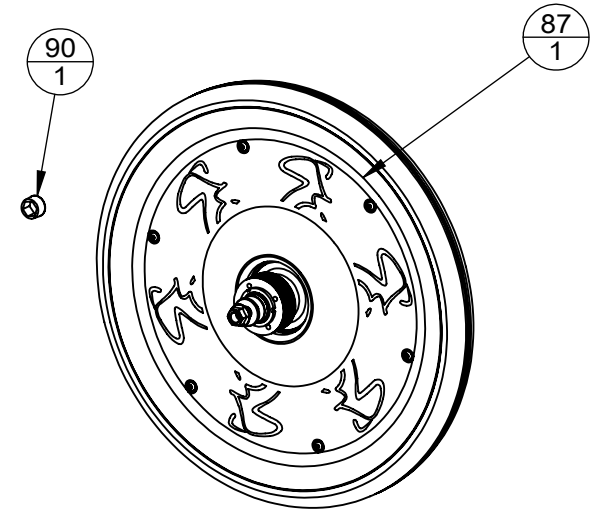
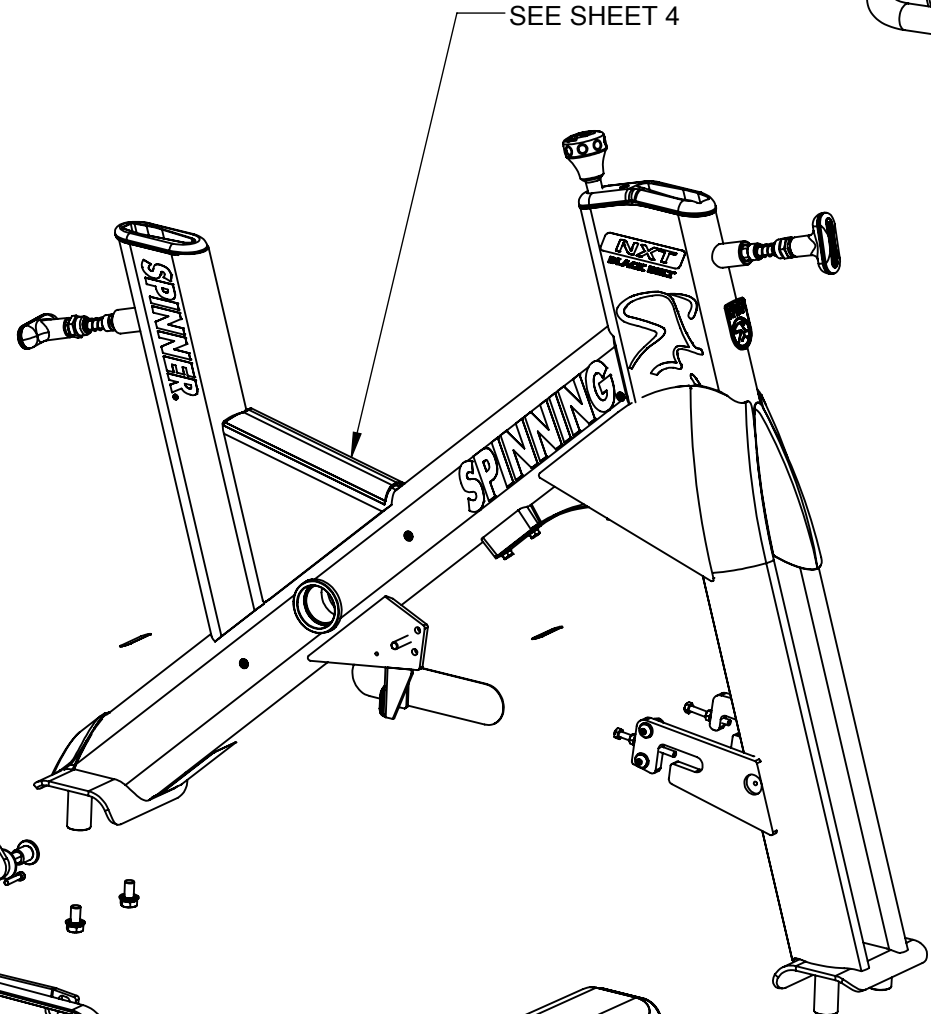
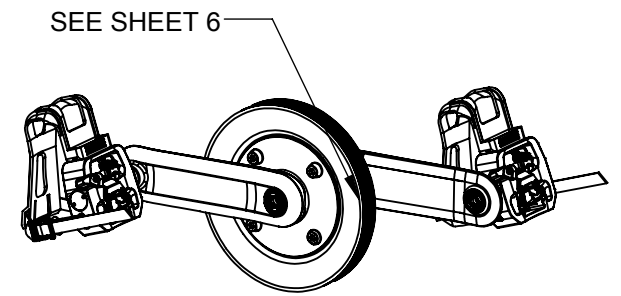
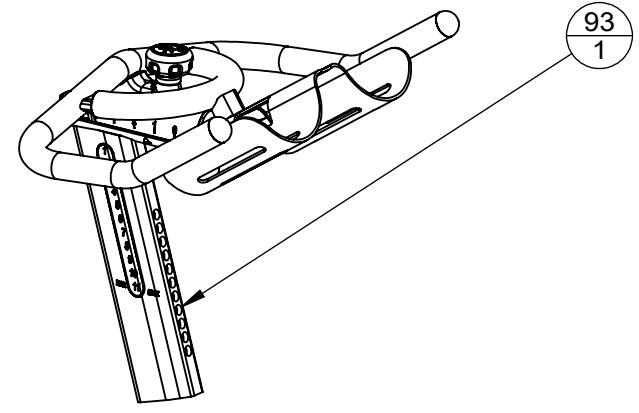
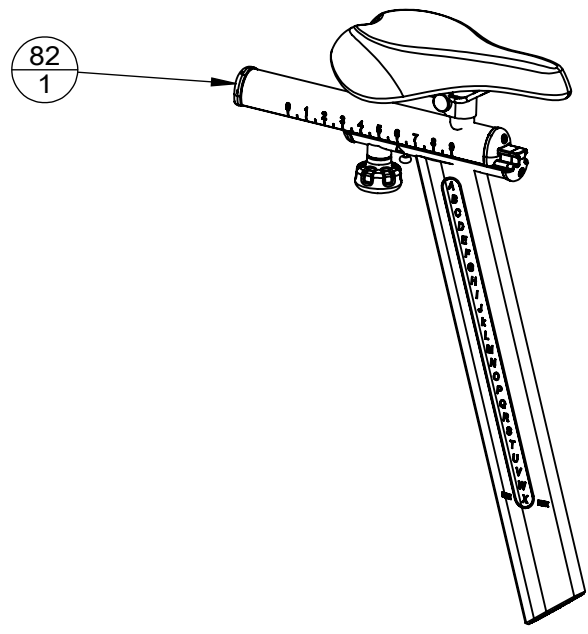


**CORE HEALTH & FITNESS, LLC**  
 4400 NE 77th Ave., Suite 300  
 Vancouver, WA 98662

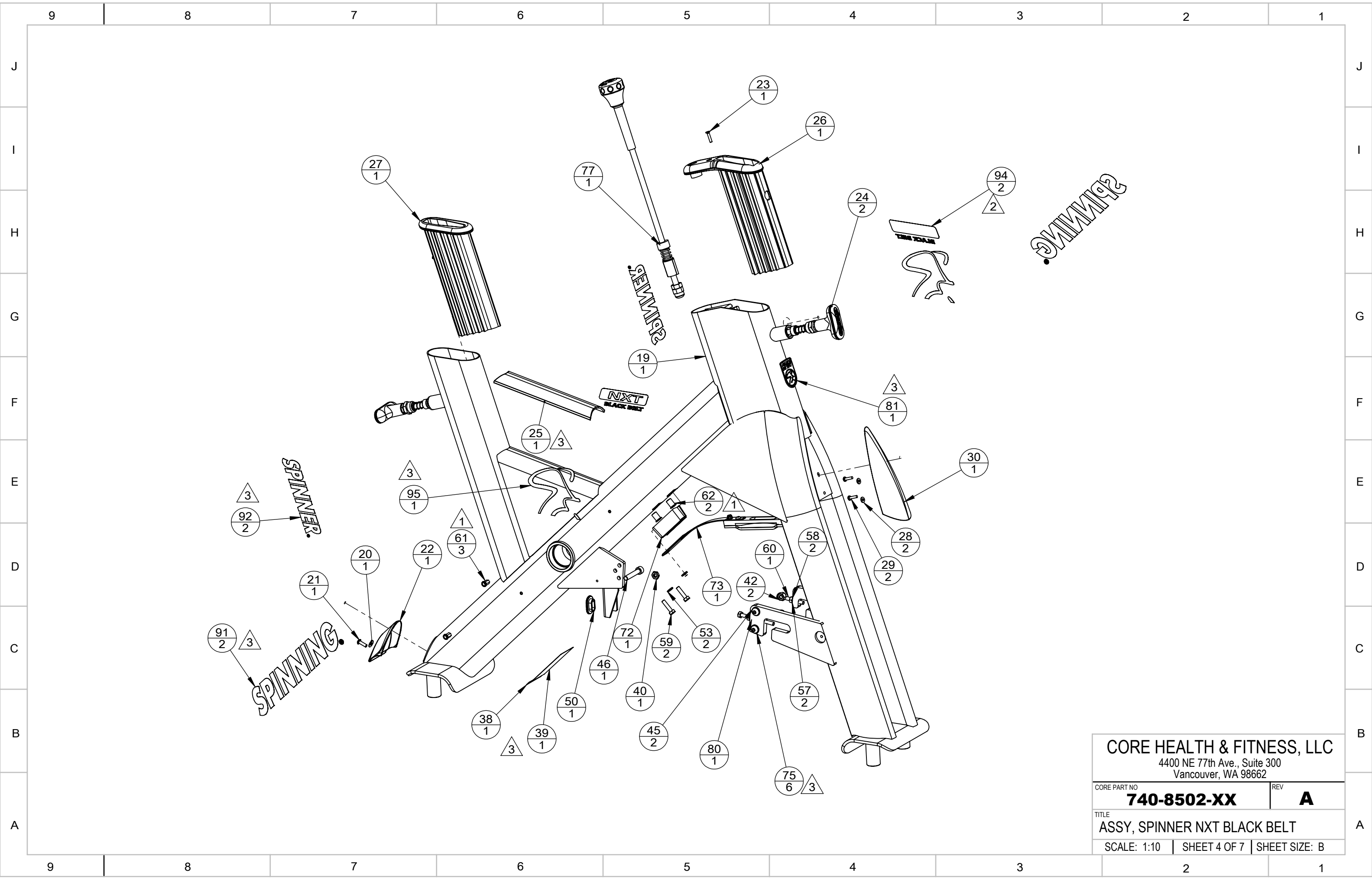
CORE PART NO	REV
<b>740-8502-XX</b>	<b>A</b>
TITLE	
ASSY, SPINNER NXT BLACK BELT	
SCALE: 1:10	SHEET 2 OF 7   SHEET SIZE: B

NOTES:

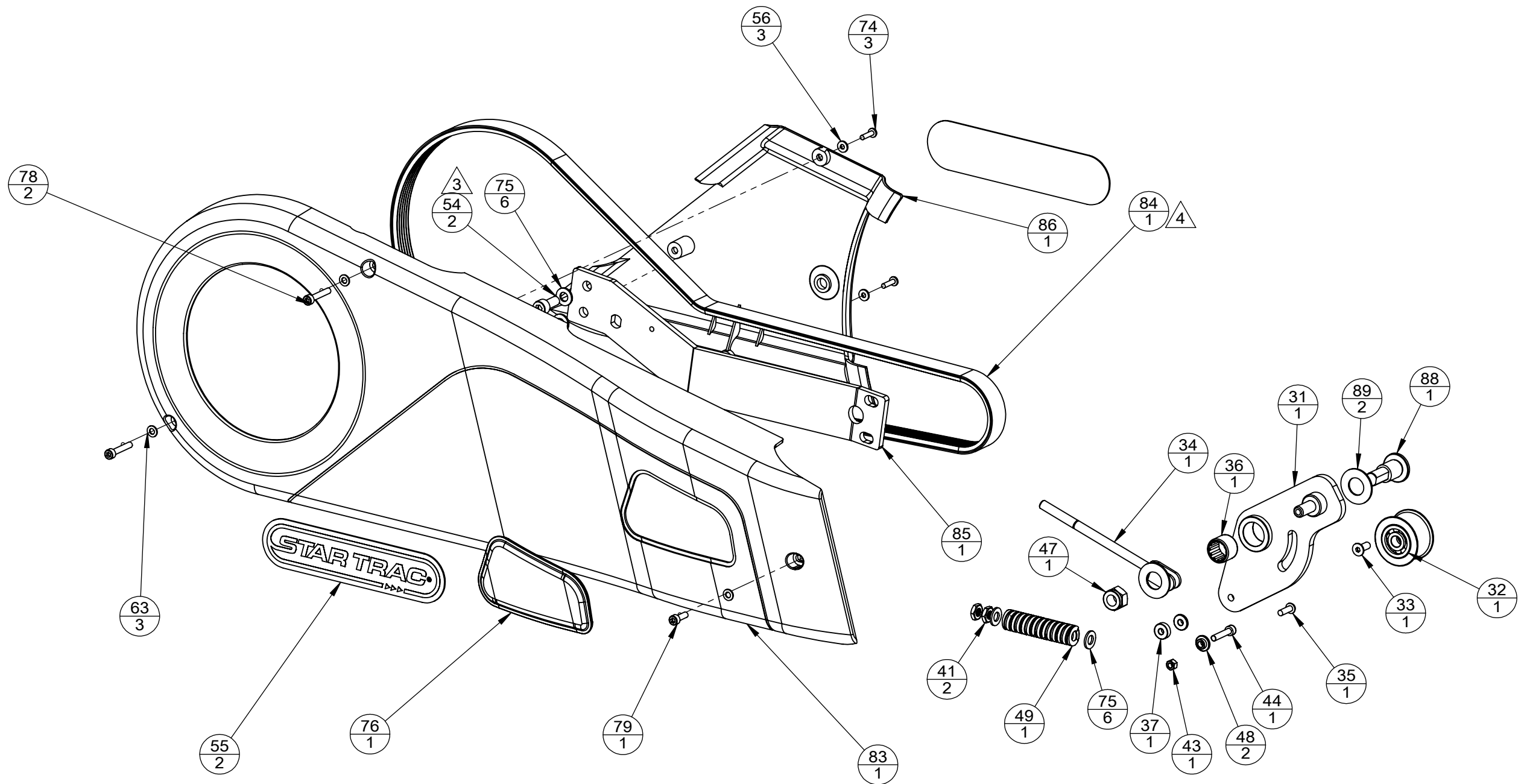
1. FOLLOW MFG SPEC ON PROPER INSTALLATION OF RIVET FASTENER
2. CLEAN AREAS WITH DENATURED ALCOHOL PRIOR TO ADHERING LOGOS AND LABELS
3. TORQUE TO 11 ft-lbs / 15 N-m
4. TENSION BELT TO 90 HZ +/- 10 HZ
5. COLOR DESIGNATOR AS PER -XX. AS SPECIFIED IN SOP 620-8222



CORE HEALTH & FITNESS, LLC 4400 NE 77th Ave., Suite 300 Vancouver, WA 98662		
CORE PART NO	<b>740-8502-XX</b>	REV <b>A</b>
TITLE ASSY, SPINNER NXT BLACK BELT		
SCALE: 1:10	SHEET 3 OF 7	SHEET SIZE: B

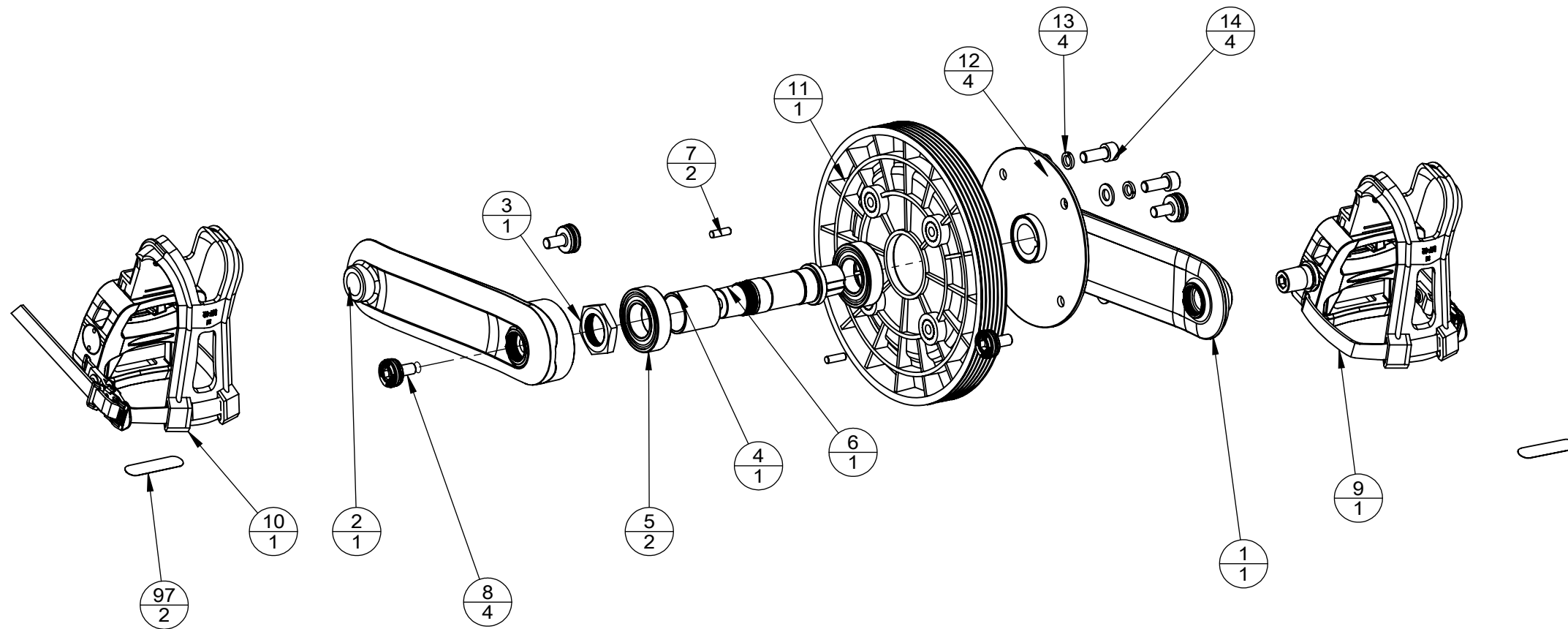


<b>CORE HEALTH &amp; FITNESS, LLC</b> 4400 NE 77th Ave., Suite 300 Vancouver, WA 98662		
CORE PART NO	<b>740-8502-XX</b>	REV <b>A</b>
TITLE ASSY, SPINNER NXT BLACK BELT		
SCALE: 1:10	SHEET 4 OF 7	SHEET SIZE: B



CORE HEALTH & FITNESS, LLC  
 4400 NE 77th Ave., Suite 300  
 Vancouver, WA 98662

CORE PART NO	REV
<b>740-8502-XX</b>	<b>A</b>
TITLE	
ASSY, SPINNER NXT BLACK BELT	
SCALE: 1:10	SHEET 5 OF 7   SHEET SIZE: B

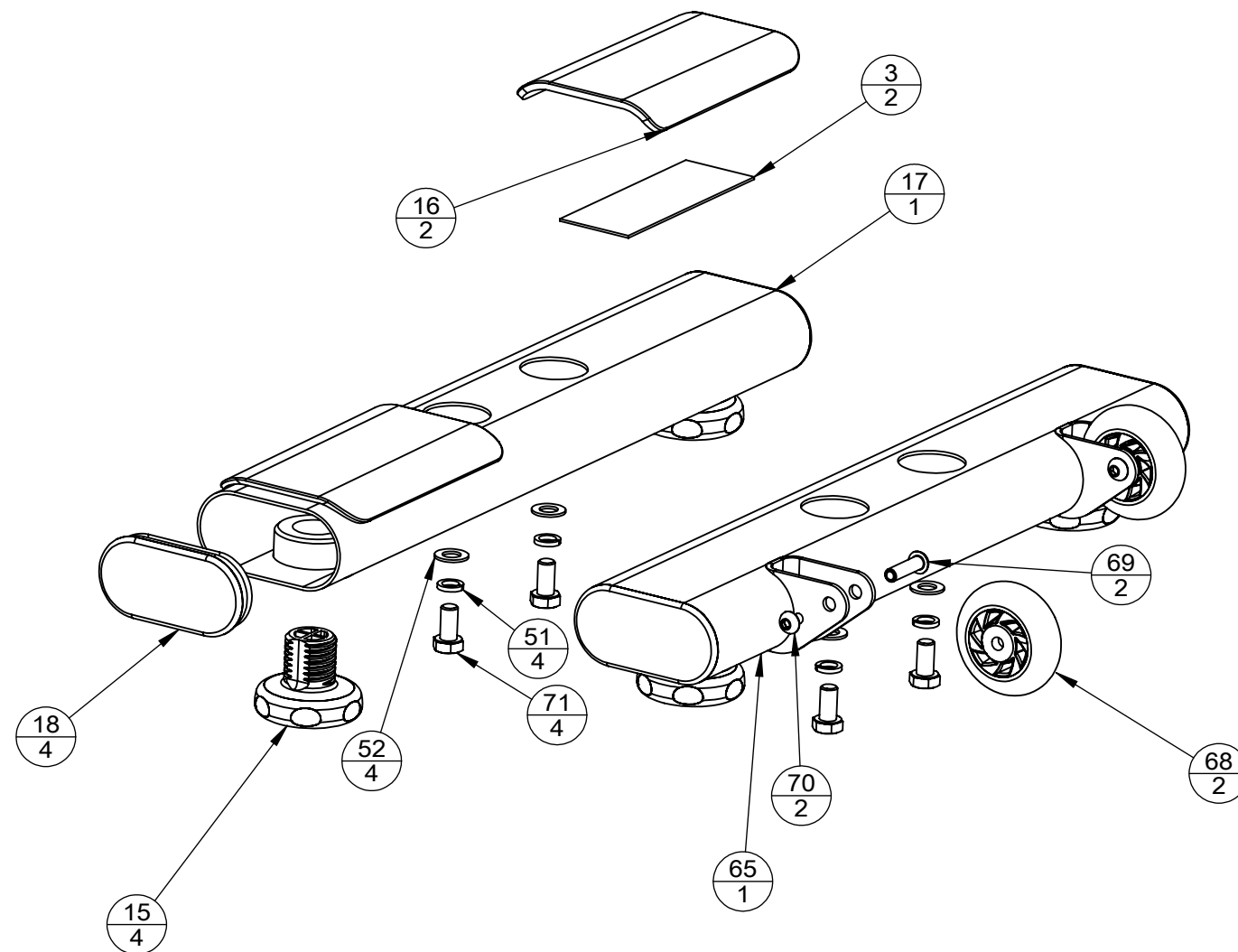


CORE HEALTH & FITNESS, LLC  
 4400 NE 77th Ave., Suite 300  
 Vancouver, WA 98662

CORE PART NO	<b>740-8502-XX</b>	REV	<b>A</b>
--------------	--------------------	-----	----------

TITLE  
 ASSY, SPINNER NXT BLACK BELT ASSY, SPINNER

SCALE: 1:10	SHEET 6 OF 7	SHEET SIZE: B
-------------	--------------	---------------



<b>CORE HEALTH &amp; FITNESS, LLC</b> 4400 NE 77th Ave., Suite 300 Vancouver, WA 98662		
CORE PART NO	<b>740-8502-XX</b>	REV <b>A</b>
TITLE ASSY, SPINNER NXT BLACK BELT		
SCALE: 1:10	SHEET 7 OF 7	SHEET SIZE: B